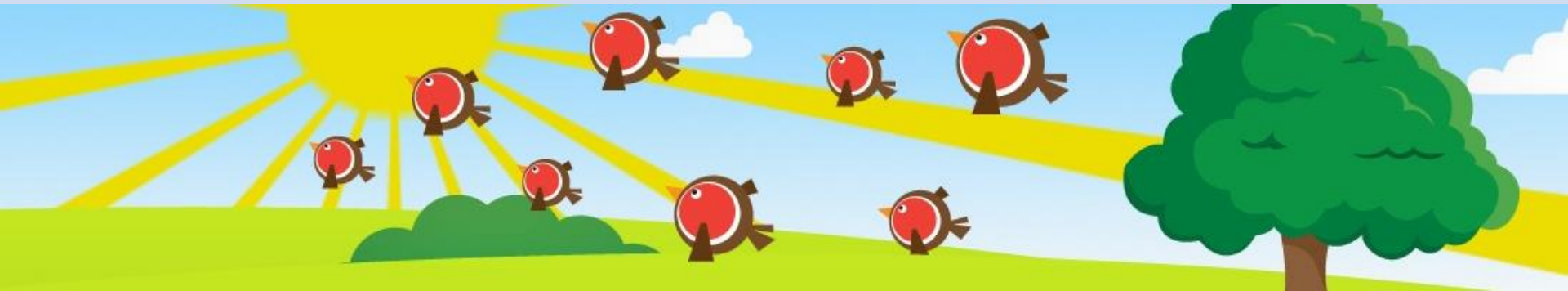


Year 2



Burwardsley July 2025





### Newchurch Staff



Mrs Sizer



Mr Hughes



Mrs Parkinson



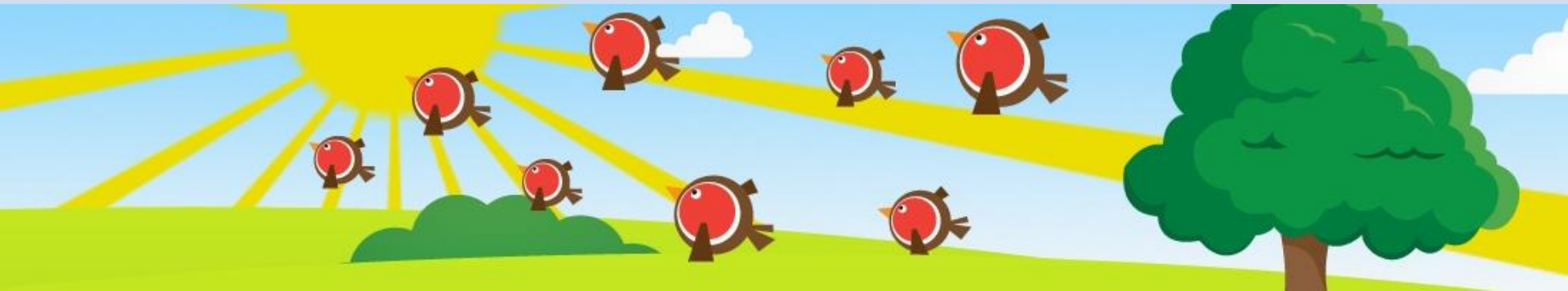
Mrs Barton

# When and Where?

## Burwardsley

Thursday 3<sup>rd</sup> July – Friday 4<sup>th</sup> July 2025

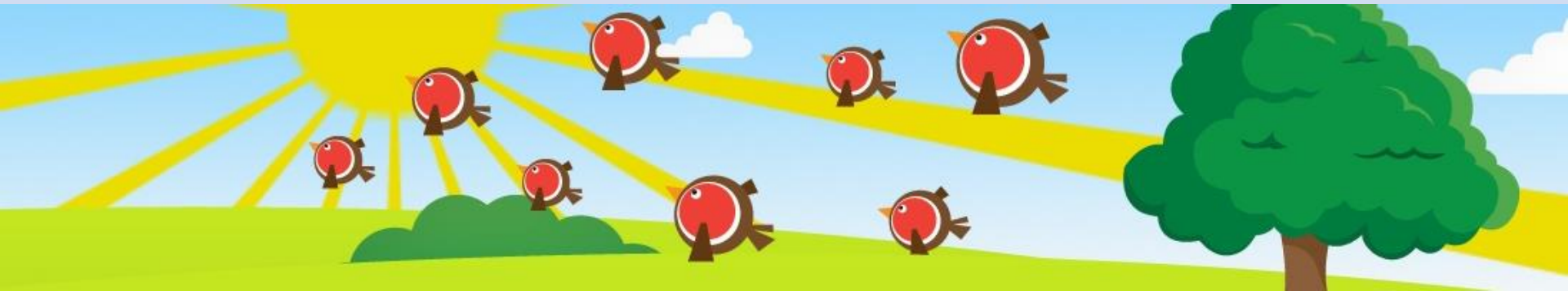
The children will leave school at approximately 11am and the coach will take the children straight to Burwardsley Centre where the children will get settled in. On Thursday afternoon, the children do den building and go on a habitat walk in the woods.



# Accommodation?

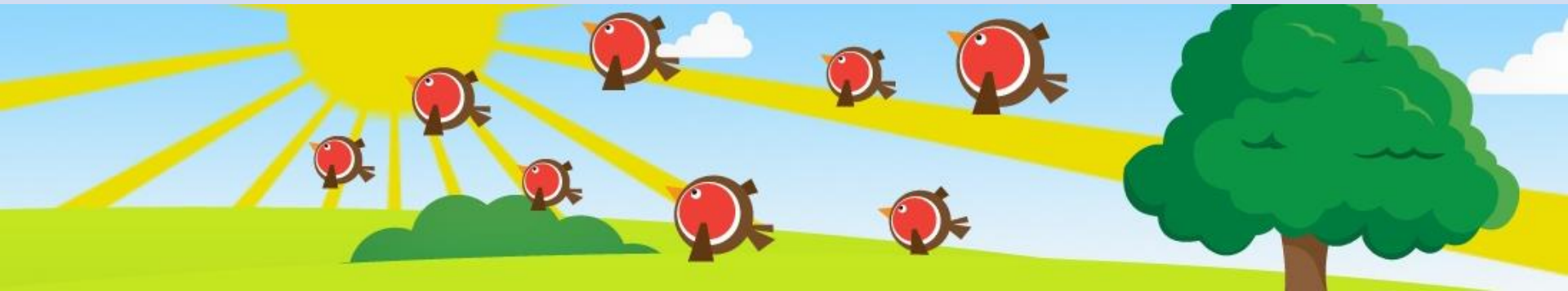


The children will stay in two big rooms – one for boys and one for girls. Staff will be nearby should children need them.



# Meal times

- The children will take a packed lunch on Thursday and will be provided with the following meals whilst we are there.
  - Tea on Thursday
  - Snack before bed on Thursday
  - Breakfast on Friday
  - Lunch on Friday
- 
- If you have informed us that your child has any dietary requirements, this has been passed on to Burwardsley and any dietary needs will be catered for during our stay.

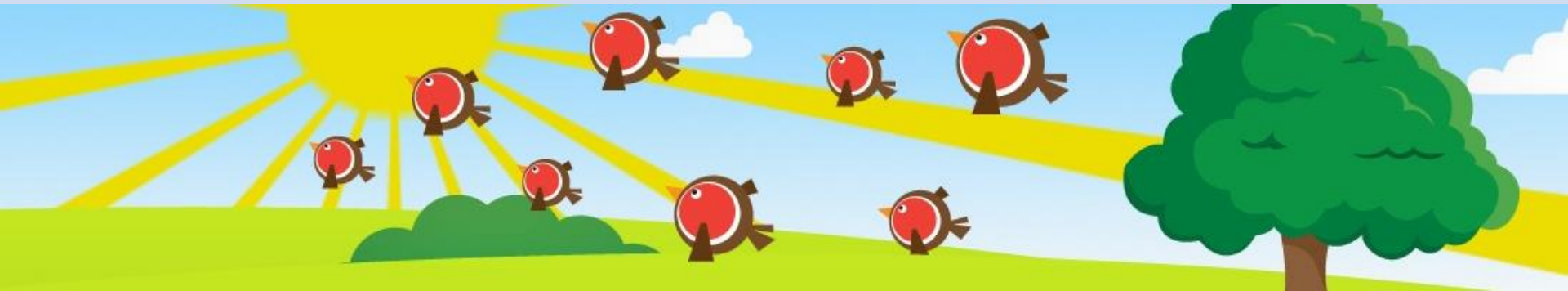




# What shall we pack?

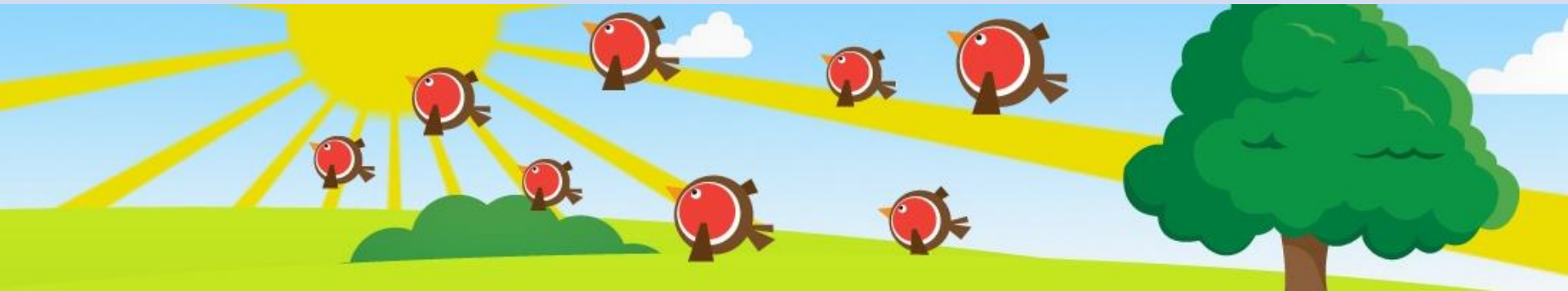
When packing your case, you may want to consider the following:

- Comfortable clothing for each day joggers, leggings, t-shirts, hoodies, etc.
- Comfortable trainers, wellies in case of wet weather
- Waterproof coat
- Hoodie or fleece in case of cold weather
- Underwear, including spares
- Sleepwear
- Toiletries including a toothbrush, toothpaste, brush and hair ties and a small towel
- Indoor shoes/slippers
- Children may also bring **one** comfort item with them, for example a pillow or teddy bear.



# Conduct and expectations

As is always stated to the children during any activities, both on and off school site, we are representing Newchurch and our core values must remain at the heart of what we do. There will be times when we might mix with other schools and members of the public. The children will be supervised at all times, however, we will expect appropriate behaviour during the trip. The children are going with staff that they know so if there are any issues they know they can come and inform us. Maintaining acceptable levels of behaviour (related to the physical and emotional safety for everyone) is essential. In extreme circumstances, individuals whose behaviour places themselves or others in danger or effects the safe learning environment for others may be excluded from participation.



# Contact

Keep an eye on Twitter and Facebook for updates on what we are up to and the activities children are taking part in.

