

Newchurch Community Primary School
Glebeland
Culcheth
Warrington
WA3 4DX



Telephone: 01925 763427
Fax: 01925 766045
www.newchurchprimary.co.uk
Email: newchurch_primary@sch.warrington.gov.uk

Headteacher: Mrs J Narraway

26th May 2023

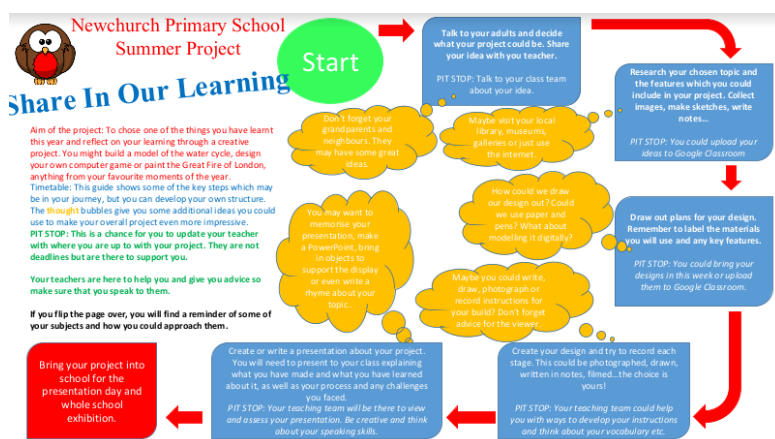
Dear Parent/Carer,


Congratulations to our gorgeous Year 2 children who have completed their Statutory Aptitude Tests (SATs) this week. They have been exceptional and taken it all in their stride. It is remarkable how such little people can have such resilience and drive. What an impressive bunch they are!

Summer Homework Project

In the last half term of each year, we move away from the homework we usually do in order to release the children's creativity. We call our curriculum a 'Chocolate Box Curriculum' which means we ensure that all areas of the curriculum are taught equally to ensure that every child's talents can be discovered and they have the opportunity to excel in a particular subject.

In order to celebrate this, we have decided to have a Summer Homework Project which will focus on the children have free choice of all the subjects they have been taught this year and selecting a way in which they can present their learning.





Pick your favourite subject, project or area of learning and think about how you could teach tell the rest of the school all about it. These are just some of the units you have covered. To see more, go to the Share In Our Learning section of the school website and click on your year group.
https://newchurch-primary.eschools.co.uk/website/our_newchurch_robins/617424

English <ul style="list-style-type: none"> Make a book of poetry about the things you have learned. Film a play. Build a model of a setting from a story. Make a sculpture of a character from a text. 	Science <ul style="list-style-type: none"> Build a model of your learning e.g. the solar system, a life cycle, how evolution works. Research a famous or pioneering scientist. 	Art <ul style="list-style-type: none"> Adopt the style of an artist you have covered. Visit an art gallery and create a fact file of the things you see. Make a top trumps set for the world's greatest artists.
Music <ul style="list-style-type: none"> Learn a song and record it. Make an information pack about a type/genre of music you have studied. Compose your own piece of music. Build your own instrument and record yourself playing it. 	History <ul style="list-style-type: none"> Build a model of a settlement/city from your time period. Investigate a famous figure in history. 	Geography <ul style="list-style-type: none"> Build a model of a physical process e.g. the water cycle or how mountains are formed. Design your own map and think about how you can make it clear to read. It could be for your local area or somewhere you have visited.
Design <ul style="list-style-type: none"> Design and build a model you have looked at. Reflect on your food technology and make a recipe of your own. Create a review of foods you have tried. 	Computing <ul style="list-style-type: none"> Try downloading a coding package and making your own programme or game. Make an animation about the things you have learned this year. 	RE <ul style="list-style-type: none"> Make a model of a place of worship. Design your own stained glass which tells a religious story.

This link on our school website: https://newchurch-primary.eschools.co.uk/website/our_newchurch_robins/617424 houses the 'Share in our learning' documents which explain what has been taught in each half term this year. The children can select anything they wish for their summer project.

The details will be uploaded to the Google Classroom today enabling any children to work on them over the two week Whit holidays if they wish. The document outlines a timetable to support the completion of the project over the next half term.

All the children's projects will be showcased in the school hall on Friday 21st July and then the following week they will complete a presentation of their project to their classmates as part of their speaking and listening curriculum in English.

As the Summer Homework Project is so personalised to the child, this means that the Monday after school homework club will not be taking place next half term.

Relationships and Sex Education

Along with you as parents, we want the children of Newchurch to grow up healthy, happy, safe and able to manage the challenges and opportunities of modern Britain. From September 2020, all primary age children are expected to be taught Relationships and Health Education (RSE).

These subjects are designed to equip your child with knowledge to make informed decisions about their well-being, health and relationships as well as preparing them for a successful adult life. The world is an ever-changing landscape for our young people and it looks very different from the way it did twenty-one years ago, which was when this part of the curriculum was last updated. The content of the curriculum brings these subjects into the 21st century, so that it is relevant to our children now.

At Newchurch, we have the flexibility to deliver the content in a way that is age and developmentally appropriate to the children, yet sensitive to the needs and religious backgrounds of our families.



Relationship Education will put in place the foundations for positive and safe relationships, including those with family, friends and online. Your child is taught what a relationship is, what friendship is, what family means and who can support them. In an age appropriate way, we will cover how to treat each other with kindness, consideration and respect. By the end of primary school, the children will have been taught content on:

- Families and people who care for them
- Caring friendships
- Respectful relationships
- Online relationships
- Being safe

Health Education aims to provide your child with the information they need to make good decisions about their own health and well-being, to recognise issues in themselves and others, and to seek support as early as possible when issues arise. By the end of primary school, the children will have been taught content on:

- Mental wellbeing
- Internet safety and harms
- Physical health and fitness
- Healthy eating
- Facts and risks associated with drugs, alcohol and tobacco
- Health and prevention
- Basic first aid
- Changing adolescent body

The lessons that you as parents teach your child about healthy relationships, looking after themselves and staying safe, will be respected and valued under the curriculum. At Newchurch, we hope to complement and reinforce the lessons you teach your child as they grow up.

You are not able to withdraw your child from Relationships Education because it is important that all children receive this content, covering topics such as friendships and how to keep safe.

At Newchurch, we do teach Sex Education. Prior to the pandemic, the Parent Board discussed our curriculum offer and are happy with its content and a further consultation was conducted via a google form last year which showed that parents were happy with school delivering this part of the curriculum. A particular scheme of work has been used to ensure that what we teach is age appropriate. Please follow this link to see what each year group will cover: [Newchurch Primary School - Personal, Social and Health Education and RSE](#)

If you do not wish for your child to take part in some, or all, of the lessons on Sex Education, please can I ask that you first speak with either myself or Mr Duckett and then if you still wish to withdraw that you



do so **in writing before 12th June 2023** The science curriculum in all maintained schools include content on human development, including reproduction, which there is no right to withdraw from.

Finally, please see the diary of dates below which has any new dates added on red.

Wishing you all a lovely half term break and we look forward to seeing you all on **Monday 12th June**.

Kindest regards,

Mrs Jayne Narraway

Headteacher

Summer 2023

When is it happening?	What is happening?	Who is involved?
Friday 26th May 2023	School closes	
Monday 12th June 2023	School opens	
W/c 12 th June 2023	Phonics Screening Check	Year 1 and some Year 2
W/c 12 th June 2023	Multiplication Check	Year 4
Monday 12 th June 2023	New starter meeting at 6:30pm	September 2023 Robins
Wednesday 14 th June 2023	Safety Central trip	Year 5
Thursday 15 th June 2023	Year 4 Loved One to Lunch at 11:30am	Year 4
Thursday 15th June 2023	PTA Meeting at Culcheth Arms at 6pm	All parents
Thursday 15 th June 2023	Burwardsley Meeting at 2:30pm	Year 2 parents and children
Thursday 29 th June 2023	Year 5 Loved One to Lunch at 11:30am	Year 5
Friday 30 th June 2023	Clubs finish	All classes
Tuesday 4 th and Wednesday 5 th July 2023	Burwardsley	Year 2
Wednesday 5 th July 2023	Culcheth High School Transition Day	Year 6 children attending CHS
Thursday 6 th July 2023	Moving Up Day	All classes visit new classes
Monday 10 th July 2023	TTRockstars Day	All classes
Thursday 13 th July 2023	Year 6 Loved One to Lunch at 11:30am	Year 6
Friday 14 th July 2023	RobinFest	All classes
Monday 17 th July 2023	Feast of Choirs 3:45pm for rehearsal and 6:30pm for performance	Year 6 children and families (tickets will be available soon)
Tuesday 18th July 2023	75th birthday of the NHS day	All classes
Wednesday 19 th July 2023	Year 6 Performance and Award Ceremony from 5:30pm	Year 6 and families
Friday 21 st July 2023	KS2 Sports Day (am)	Year 3, Year 4, Year 5 and Year 6
Friday 21 st July 2023	Reports out	All classes



Artsmark
Gold Award
Awarded by Arts
Council England



LOTTERY FUNDED



MUSIC MARK
SCHOOL



Friday 21 st July 2023	Summer Projects in and exhibition in the hall	All classes and all parents/grandparents invited to see the exhibition after school.
Monday 24 th July 2023	KS1 Sports Day (am)	Reception, Year 1 and Year 2
Wednesday 26 th July 2023	Leavers' Assembly at 2pm	All classes
Wednesday 26 th July 2023	School closes	



Artsmark
Gold Award
Awarded by Arts
Council England



Warrington
Borough Council
Children's Services



LOTTERY FUNDED



MUSIC MARK
SCHOOL

