

# PROSPECTUS

Newchurch C.P. School



Preparing To Fly

Newchurch

Dear Parents,

I am very proud to be the Headteacher of Newchurch Community Primary School. We are a school which has a strong sense of community and belonging; we are a family. The children, staff, families and governors are united in one aim - to make Newchurch Primary the very best that it can be. We prepare our Newchurch Robins to fly by developing confident and positive learners and citizens of society.

Our latest Ofsted report (November 2024) states:

'Pupils are proud of the positive contribution that they make to school life. They are enthusiastic about their many responsibilities. These include taking on roles like subject leaders, sports leaders and buddies. Older pupils particularly enjoy supporting children in the early years with their learning. They retell with fondness the many magical memories of their journey through school.'

At Newchurch, we are committed to providing a broad and balanced curriculum which is enhanced by a plethora of cultural activities which links in with our school's mission statement. We do not know if we have a future Olympian, ground-breaking scientist or designer of an iconic building in our midst. Therefore, every subject matters and every talent is nurtured to enable our children to take a positive step towards their future.

We hope you find the information in this prospectus useful in selecting a school for your child. We know it is one of the most important decisions a parent must make for their family. We are proud of our school and welcome the opportunity to share with you our vision for Newchurch Community Primary School.

**Best wishes,**

**Mrs. Jayne Narraway**  
**Headteacher**



# Mission Statement

NEWCHURCH WILL GIVE EVERY CHILD  
A FLYING START BY WORKING IN  
PARTNERSHIP WITH PARENTS, STAFF  
AND THE COMMUNITY TO DEVELOP  
AND CELEBRATE WELL-ROUNDED  
CITIZENS WHO WILL CONTRIBUTE IN  
A POSITIVE WAY TO SOCIETY.





## GOVERNORS

### **LOCAL EDUCATION AUTHORITY**

Mrs Jean Williams

### **STAFF (TEACHER) REPRESENTATIVES**

Mrs Jayne Narraway  
(headteacher)  
Mr John Duckett

### **PARENT REPRESENTATIVES**

Mrs Niamh Harrison  
Mr Gary Marsh  
Ms Taryn Lowe

### **CO-OPTED GOVERNORS**

Mr. John Duckett  
Mrs Tatiana Heywood  
Mrs Anthea Ray  
Mr Simon Arnold  
Mrs Vicky Beddall  
  
Mrs Claire Howarth-Platt  
(Chair of Governors)



# TEACHING STAFF

## HEADTEACHER

Mrs J Narraway

## DEPUTY HEADTEACHER

Mr J Duckett

## RECEPTION TEACHER

Mrs R Sizer

## YEAR ONE TEACHER

Mrs J Toone

Mrs H Brinksman- Wood

## YEAR TWO TEACHER

Mr L Singleton

## YEAR THREE TEACHER

Miss L Igglesden

## YEAR FOUR TEACHER

Mrs R Parkinson

## YEAR FIVE TEACHER

Miss M Lunn

## YEAR SIX TEACHER

Mr J Duckett

## SUPPORT TEACHER

Mrs J Mowbray

## TEACHING ASSISTANTS

Mrs S Storey

Mrs L Worthington

Mrs A Barton

Mrs T Dixon

Mrs J Monks

Miss M Bowers

Miss J Rendell

Miss R Sullivan

Mr N Boon

## ADMIN STAFF

Mrs M Waterman

Mrs R Burns (School Business Manager)

## MAINTENANCE OFFICER

Mr J Callis

## MIDDAY ASSISTANTS

Mrs K Shepherd

Miss R Sullivan

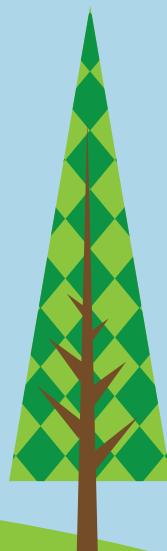
Ms M Aspinall

Mrs D Edgar

Ms H Cushion

Ms J Morse

Miss J Rendell



# NEWCHURCH COMMUNITY PRIMARY SCHOOL

## Admissions Policy

Children may start school during the academic year, that is from September 1st to August 31st, in which they are 5. Admission to any school depends on meeting certain criteria according to Government regulations, this relates to siblings already in school and permanent place of residence. Our admission limit is 30 and in the event of over-subscription, these criteria will need to be applied. For full details of the procedures please contact the school.

Prospective parents and their children are welcome to come into school at any time although it is advisable to make an appointment. New children will have opportunities to meet their teacher and feel confident in their new surroundings before starting school. New parents are invited to meetings to gather information and meet staff prior to their child starting school.

We hope that Reception pupils will be in school on a full-time basis by the end of the first full week of the Autumn term.

## Open Access

We have parental conferences each year for individual discussions with the class teacher. There are further opportunities to come into school to see how we work but if you would like to have a tour of the school in operation, please feel free to contact the school office and they will arrange an individual tour with the headteacher.

To facilitate transition into the next school year, we invite parents in to meet their child's new class teacher and information is shared.

We also hold 'Invite a Guest' sessions where parents can come into school and work alongside their child completing fun activities linked to the curriculum.

Teachers are always willing to discuss your child's development at any time through the year although it is advisable to make an appointment.

## Parent Teacher Association

All parents are encouraged to become involved in the activities of our Parent Teacher Association. It has an important social, financial and educational function, promoting co-operation and understanding between school and home.

Many events are organised by the PTA over the school year; for example, discos, barbecues, balls, bingo nights to name a few.

Over recent years, the children have benefitted from a trim trail playground equipment, all weather pitches, iPads and more recently the development of the Early Years outdoor learning environment.



# PROSPECTUS 2025/26

[www.newchurchprimary.co.uk](http://www.newchurchprimary.co.uk)

# NEWCHURCH COMMUNITY PRIMARY SCHOOL

## Newchurch Robins

We run our own before and after school club on the school site (7:30am – 8:45am then 3:10pm – 5.30pm). Details of this can be found on our school website and application forms can be obtained from the school office.

## The Organisation of Teaching and Learning

Gates and classrooms doors open at 8:40am

School starts at 8:45am for all classes and finishes at 3:15pm

Morning Break for Key Stage 1 and Key Stage 2. We operate a flexible playtime system where the class teacher will take their own class out for fifteen minutes.

Lunch for KS1 is 12pm – 1pm

Lunch for KS2 is 12:15pm – 1pm

## Timetable

The children are organised into seven classes under the care and supervision of a class teacher. The classes consist of children of mixed abilities within one age range.

## School Dinners

Varied school dinners are prepared on the premises and are of a very high standard of nutrition. We operate a cashless system so payments for lunches are made through ParentPay. Details of how to register for this will be provided when your child starts

school. As of September 2014, all children in the Early Years and Key Stage One are entitled to a free school meal. If you feel your child is eligible for free school meals, but not in Key Stage One, please contact the school office for details.

Children may bring packed lunches to eat in the dining room, or may go home for lunch. Children going home should not return to school until five minutes before their class is due in from lunchtime.

PROSPECTUS 2025/26

[www.newchurchprimary.co.uk](http://www.newchurchprimary.co.uk)

# HOLIDAY LIST 2026-2027

## SCHOOL YEAR 2025/26

School Opens

School Closes

Autumn A

Wed 2 Sept 2026

Fri 23 Oct 2026

Autumn B

Mon 2 Nov 2026

Fri 18 Dec 2026

Spring A

Tue 5 Jan 2027

Fri 12 Feb 2027

Spring B

Mon 22 Feb 2027

Thur 25 Mar 2027

Summer A

Thur 8 April 2027

Fri 28 May 2027

Summer B

Mon 14 June 2027

Thur 21 July 2027

**Bank Holiday Easter Weekend** (Friday 26 March 2027 and Monday 29 March 2027)  
falls within the Easter holidays

**May Day Holiday** Monday 3 May 2027

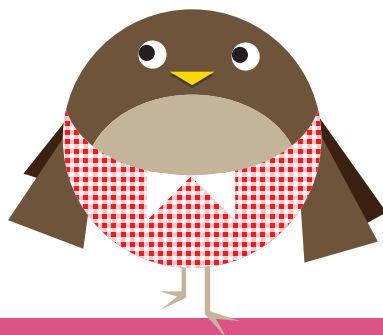
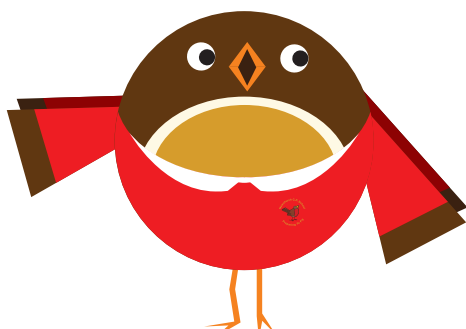
## School Uniform

The school uniform consists of a white polo shirt and red sweatshirt or fleece embroidered with the school's logo to be worn with a grey skirt or trousers. Black school shoes should be worn.

Customised items are available through Warrington Schoolwear, 50-54 Buttermarket Street, Warrington, WA1 2NN. 01925 576868 [alphaschoolwear.com](http://alphaschoolwear.com)

After Easter, red gingham summer dresses may be worn. The children will need black shorts, a red polo shirt and a pair of trainers for PE. This kit should be kept in a pump bag. Marking of all belongings would be very much appreciated.

Children will also need a pair of wellies to keep in school.



PROSPECTUS 2025/26

[www.newchurchprimary.co.uk](http://www.newchurchprimary.co.uk)





# A STATEMENT OF PHILOSOPHY

All children are entitled to high quality educational experiences which will enhance self esteem, skills, knowledge and personal satisfaction. We believe they learn best in a caring and stimulating atmosphere. Our achievement of this is confirmed by Ofsted who awarded us an outstanding judgement for the personal development of our children:

‘The school’s approach to developing pupils’ personal development is exceptional. Pupils have access to an extensive range of opportunities that prepare them very well for life in modern Britain. Visits, visitors and clubs are carefully mapped out to enhance pupils’ learning beyond the classroom. Pupils develop a deep knowledge of important concepts such as democracy and respect through a range of activities. They learn how to be healthy, including looking after their own mental and physical health.’ Ofsted November 2024:

## AIMS OF THE SCHOOL

Our aims are to encourage pupils to develop lively, inquiring minds, the ability to question and argue rationally and to apply themselves to their tasks.

To instill respect for moral values, for other people and oneself and tolerance for other races, religions and communities.

Respect and value the diverse nature of society in preparation for life in the wider community.

Help children understand and care for the world in which we live and recognise their responsibilities.

Encourage children to use language accurately, effectively and imaginatively in speaking, reading and writing.

Provide a basis of mathematical, scientific and technical knowledge, enabling children to learn essential skills in a fast and changing world.

Help children to develop physical skills and positive attitudes towards healthy living, personal fulfilment and team spirit.

Teach children about human achievements and aspirations in arts, sciences and religion and provide opportunities for the children to express and develop their creativity and spirituality.

Encourage and foster the development of all children according to their individual needs and abilities.

# NEWCHURCH COMMUNITY PRIMARY SCHOOL

## Respecting Differences Between Individuals

In recognising that children and adults are individuals, the school acknowledges that they have different experiences and may come from contrasting cultural backgrounds. Its policies on Equal Opportunities, Race Equality and Disability reflect a clear commitment to treat all members of the school community fairly.

## Acts of Worship

The children all participate daily in a collective act of worship which is broadly Christian in character. The assemblies also encompass social and moral education and promote a knowledge of living faiths. Parents have the right to withdraw their child from assemblies and should inform the school of their wishes.

## Teaching and Learning at Newchurch

The curriculum at Newchurch has a child-centred approach to teaching and

learning. The individuality of the child and their ability to process the information they receive is a constant source of interest and challenge to us all.

We aim to develop each child's unique potential by ensuring that they have a safe and secure place to learn. A strong collaborative ethos with opportunities for children to learn in a range of different ways.

Each teacher understands that children learn in different ways. We adjust and adapt our methods to suit our learners. We group children in different ways to maximize learning opportunities and actively promote collaborative learning and independent thinking.

We are constantly working to evaluate and develop our environment with advice from our stakeholders to make Newchurch Primary a stimulating and enjoyable place to learn.



PROSPECTUS 2025/26

[www.newchurchprimary.co.uk](http://www.newchurchprimary.co.uk)

# NEWCHURCH COMMUNITY PRIMARY SCHOOL

## The Curriculum

The school curriculum consists of everything we teach and everything that the children learn from school. Encompassing the Statutory National Curriculum and our own beliefs and aims, we call our curriculum 'a chocolate box curriculum' – there is something every child will enjoy! A passion for learning is our core aim and a curriculum which will enable pupils to enjoy and profit from their present life as children, as well as being prepared for adult life.

The following core and foundation subjects will be taught for an appropriate amount of time, so as to achieve the attainment targets for the relevant stages, Key Stage 1 for children of 5 to 7 years and Key Stage 2 for children of 7 to 11 years. As a school we have developed a bespoke creative enquiry based curriculum which aims to engage all pupils in a love of learning

### Core Subjects

Mathematics  
English  
Science

### Foundation Subjects

Geography  
Computing  
History  
Design and Technology  
Art  
Music  
Physical Education  
Religious Education  
Modern Foreign  
Languages (KS2)

### EYFS Areas of Learning

Prime Areas:  
Personal Social and Emotional  
Development,  
Communication and Language  
Physical Development  
Specific Areas:  
Literacy  
Mathematics  
Understanding the World  
Expressive Arts and Design

We follow the National Curriculum (2014) to ensure entitlement, continuity and coherence in establishing standards, which are understood by the school and society. We are very proud of our curriculum design which is bespoke to our school yet fulfils the statutory requirements of the National Curriculum. Teachers' talents and knowledge of the children's interests have been used to develop our curriculum.

Our curriculum can be seen on the school website [www.newchurchprimary.co.uk](http://www.newchurchprimary.co.uk)

The school curriculum is delivered using school-generated planning systems which are carefully monitored. This work forms the basis of discussions with the Governing Body to inform policy and practice.

PROSPECTUS 2025/26

[www.newchurchprimary.co.uk](http://www.newchurchprimary.co.uk)



# NEWCHURCH COMMUNITY PRIMARY SCHOOL

## Homework

We aim to consolidate and reinforce the school work through homework which is part of our homeschool partnership to improve your child's education particularly in English and Mathematics.

We encourage and appreciate the active involvement of parents or other adults in helping children to consolidate and develop their knowledge / skills through homework. Reading Record Books or Homework Diaries are used to assist such communication. All children are encouraged to read at home on a daily basis from their very first days in school. Other tasks are introduced as appropriate to a child's age. In the summer term, all pupils are asked to produce a project based on a theme. This forms part of a whole school exhibition to celebrate and acknowledge the children's achievements.

We use Google Classroom as a platform for all home learning. Your child will be provided with their unique login details and should they need it, a device to use at home.

## Theme Days

Throughout the year theme days are held linked to a particular subject. These days are lots of fun whilst ensuring effective learning for our pupils based on a specific subject. Provision for learning is enhanced on these days by the inclusion of visits and visitors to the school e.g. dancers, mechanics, the armed forces, etc.

## Artsmark Award

We are proud to have received the Arts Mark Gold Award, which recognises our commitment to, and our enthusiasm for, all areas of the Arts.

## Sports Mark

We have achieved the Sports Mark which recognises the excellent sports provision we have available to all children, e.g. rounders, cricket, tennis, cheerleading etc.

## Promoting British Values

We agree with the Department for Education's five part definition of British Values:

- Democracy
- The rule of law
- Individual liberty
- Mutual respect
- Tolerance of those of different faiths and beliefs

At Newchurch the children will encounter these values throughout our everyday school life. Our bespoke Personal, Social and Emotional Development Curriculum explores, explains and refines the children's understanding of the British Values named above.

## Science Mark

This year we are going for gold!

## The Healthy Child

All children take part in P E which includes dance, gymnastics, team games and development of skills appropriate to the children's age and ability. Years 4 and 5 have swimming lessons.

We encourage healthy eating and received the Healthy Schools' Award.

In Year 6, Year 4 and Year 2 the children are taken to an outdoor educational centre for a residential. Year 2 visit Burwardsley Outdoor Education Centre, Year 4 visit Kingswood and Year 6 visit Arete. This experience develops their independence, physical and social skills whilst also fulfilling the outdoor and adventurous aspect of the PE curriculum.

Throughout the year, a variety of sports coaches enhance our curriculum. We have been awarded the Active Mark for PE.

## Extra Curricular Activities

Children may join a variety of lunchtime or after-school clubs covering activities like sports/ games, science, computer skills, choir, film club, art and gardening. These are organised by the staff and friends of the school.

PROSPECTUS 2025/26

[www.newchurchprimary.co.uk](http://www.newchurchprimary.co.uk)



## Forest School

At Newchurch, we provide the children with a Forest School curriculum. This child-centred approach allows the children to develop more holistically in terms of their mind, body, emotion and spirit. It can lead to improved academic achievement, character development, physical development and good mental health and wellbeing. When children are allowed to develop their social and communication skills, are able to work in groups effectively and have a strong sense of worth and high self-esteem, then the foundations have been laid for a positive attitude towards learning.

The Forest school setting is adaptable and allows for a flexible approach to learning, accommodating a range of learning styles

and schemas, which allows children to make links and connections. Practitioners can shape learning to individual child's preferred learning styles. Forest school leaders are able to plan opportunities for children to practice 'schemas' (the building blocks of the brain) which are repetitive behaviours that in turn, forge connections in the brain.

Children develop in the context of relationships and the environment that surrounds them. Children who play in natural environments with positive role models and skilled practitioners undertake more diverse, creative and imaginative play, forming an important part of the child's development. Forest school provides endless opportunities for this high engagement and therefore high level play.

PROSPECTUS 2025/26

[www.newchurchprimary.co.uk](http://www.newchurchprimary.co.uk)

# NEWCHURCH COMMUNITY PRIMARY SCHOOL

## Performance Opportunities

Each year, we participate in the Primary Arts Network exhibition where the whole school produce art work linked to a given theme. This is displayed in the Golden Square Shopping Centre alongside other schools in the network. Throughout the year, our Newchurch Robins engage in opportunities to perform for the local community: performances as well as the choir visiting local nursing homes to sing. The older children may access specialised instrumental music tuition and ensemble work in school. We have a programme of tuition whereby music instructors visit the school and teach individual children. This is funded by the parents of the child receiving the tuition. We believe in giving the children the best opportunities possible and the experience of performance.

The school also holds an annual RobinFest which is a celebration of the performing and visual arts. Our children eagerly perform and then members of our community as well as ex-pupils come along to perform to the Newchurch Family.

## Assessment

We are continually improving our standards and results in all areas of the curriculum. We track children's progress effectively. Staff are pro-active in ensuring this system is efficient and useful in raising our standards of achievement for all.

Formal tests in English, Maths and Science during termly Progress Weeks inform our Assessment as well as rigorous moderation of levels to ensure accuracy.

During Parents' evenings you will be informed of these results and advised of any additional support your child may need.

## Reporting to Parents

Full annual reports on your child's progress are sent home at the end of each year.

Children use reading record books to enhance communication. In addition, parents receive a forecast of the half term's work which enables them to support their children's learning. This is also available on the school website.

Pupils with Special Educational Needs and Disability will meet termly with the class teacher and/or the SEN co-ordinator to formulate a personalised plan to enable them to meet their learning outcomes.

## Special Educational Needs

Children with Special Educational Needs and Disabilities are identified as soon as possible and supported according to their needs both from within the school and by outside agencies as appropriate. Children will have a personalised plan with specific targets to enable them to achieve. Further details of provision for children with Special Educational Needs and Disability can be found on the school website.

## Gifted and Talented

We aim to quickly identify children with special aptitudes in all areas of the curriculum.

We use our school assessment systems to track their progress and encourage the development of these abilities through specific enrichment activities to target their needs. Parents have made very positive comments about the quality of provision.

PROSPECTUS 2025/26

[www.newchurchprimary.co.uk](http://www.newchurchprimary.co.uk)

# NEWCHURCH COMMUNITY PRIMARY SCHOOL

## **Pastoral Care and Discipline**

Children are expected to behave in a civilised and caring manner towards each other and all adults in school. We aim to encourage the personal and social development of each child within the context of the whole school's needs.

Children who have difficulties with self discipline are treated firmly but fairly whilst being encouraged to recognise and regret their unacceptable behaviour. They are then supported in their positive efforts to re-establish themselves in the group. Parents will always be informed when their child's behaviour is consistently inappropriate.

## **Health and Hygiene**

Medical examinations are carried out during the first and last year at primary school. All Children are given dental inspections, eye tests and hearing tests during the primary years. Parental consent is sought as appropriate.

All appropriate regulations and checks are carried out effectively. Pupils take part in termly fire drills to ensure their safety.

## **Attendance**

Full attendance is essential for optimum progress. Parents/carers should phone school on the first day of absence. A pupil who has been absent is required to bring an explanatory note. Children are marked present if attending a clinic, hospital or dental appointment etc providing the class teacher is informed beforehand. For safety reasons, children having appointments during school hours must be collected from inside school premises by their parents. Parents must sign children out in the log.

You are asked to arrange holidays during school holiday periods. As a school we do not authorise holidays in term time.

We are now required to log all absences and report them to the Local Authority. Attendance is carefully monitored by our Attendance Officer and the Local Authority. We celebrate the achievement of 100% attendance each term and at the end of the year. Parents are provided with support from the school to maintain a high level of attendance for their children.

## **Relationships and Sex Education**

The Governors have agreed to a school policy for Relationship and Sex Education to be delivered as part of the curriculum to all years. Prior notice will be given to parents regarding when this will be taught and year group planning can be found on the school website.

## **Accidents and Illness at School**

If your child is taken ill at school or has an accident you will be contacted as soon as possible. A First Aid slip will be given to your child with details of their injury and the action taken. We need correct emergency contact telephone numbers so please provide us with this information and update it as required.

Medicines should not be brought to school unless absolutely necessary and then should be given to the class teacher by the parent and a permission form completed.

# PROSPECTUS 2025/26

[www.newchurchprimary.co.uk](http://www.newchurchprimary.co.uk)





# FURTHER INFORMATION FOR PARENTS

Please refer to our school website for our policies and further information.

The information in this prospectus relates to the year 2024/2025. Although correct at the date shown below there may be changes during the school year.

‘Pupils benefit from staff knowing them very well as individuals. Across the school, staff treat pupils with kindness and respect. Staff are willing to help pupils and to listen to any concerns that they may have. This helps pupils to feel happy and safe.

The school has high expectations for what pupils, including those with special educational needs and/or disabilities (SEND), will learn. Pupils demonstrate the school’s values of resilience, respect, responsibility, resourcefulness, reciprocity and reflection. Pupils learn what these values mean and why they are important. Pupils mostly achieve well and are ‘prepared to fly’ by the time they move on to the next stage of their education.’

## **Ofsted November 2024:**

Please do not hesitate to contact the Headteacher for further information.

### **School Website**

[www.newchurchprimary.co.uk](http://www.newchurchprimary.co.uk)

### **Twitter**

@newchurchcp

### **Facebook**

[www.facebook.com/NewchurchCP](http://www.facebook.com/NewchurchCP)

### **Full Ofsted report available from**

[www.ofsted.gov.uk](http://www.ofsted.gov.uk)







## **Newchurch Community Primary School**

Glebeland Culcheth Warrington WA3 4DX

### **Telephone**

01925 763427

### **Facsimile**

01925 766045

**[www.newchurchprimary.co.uk](http://www.newchurchprimary.co.uk)**

### **Email**

[newchurch\\_primary@sch.warrington.gov.uk](mailto:newchurch_primary@sch.warrington.gov.uk)

### **Twitter**

[@newchurchcp](https://twitter.com/newchurchcp)

### **Facebook**

[www.facebook.com/NewchurchCP](http://www.facebook.com/NewchurchCP)

**WARRINGTON**  
Borough Council



Design by Charlie [charlie@charliebattersby.plus.com](mailto:charlie@charliebattersby.plus.com)