

Newchurch Community Primary School  
Glebeland  
Culcheth  
Warrington  
WA3 4DX



Telephone: 01925 763427  
Fax: 01925 766045  
www.newchurchprimary.co.uk  
Email: newchurch\_primary@warrington.gov.uk

Headteacher: Mrs J Narraway

15<sup>th</sup> January 2021

Dear parent/carer,

On Monday, Mrs Conreen will be conducting the Year 4 parental conferences throughout the day, and into the early evening. Therefore, we are looking at a different approach to learning both at home and in school in order to facilitate this.

The children will have the live register in the morning just so we can log their attendance that day. After that, there is a more flexible approach to the day where the children will work on a number of cross-curricular activities linked to their current topic, 'Footprints across Europe.' Children in school will also be following this plan.

The children will need to choose **one** of the strands to work on throughout the day; whichever one takes their fancy. They must choose wisely as they cannot swap to another one later in the day.

**Select a strand to work on and work down each column.**

**Stories linked to the theme to enjoy.**

**Activities built in to support mindfulness and mental health.**

Year 4 cross-curricular days				
 Listen to the music – the traditional music from different parts of Europe.	 Fancy a break? Find out more about the traditional dances.	 Let's get singing! Click on the link and learn the song 'The Polish Wanderer'. Try it out at home.	 Listen to the story of Babushka and the Three Kings. Can you retell the story as a story map or a comic strip.	 Look at this map of Europe. Place the countries in alphabetical order.
 This is the Eiffel Tower in Paris. Can you do a pencil drawing of it? Look carefully at the details and look at these.	 Meet Antoni Gaudi. Watch this short video to see his great work!	 Get those scissors ready! Watch this video of polish wycinanki art or try gawady. Have a go with old newspaper or wallpaper.	 This is the Kremlin. Look at the fabulous shapes, colours and patterns. You have been commissioned to design a new building in Moscow. Draw your design and perhaps make a small model using junk materials, LEGO – anything you have!	 Challenge yourself to make a board game or quiz linked to the different countries in Europe. Research information on landmarks, rivers, traditional clothes, dances and food. Any trivia will do! Be as creative as you wish with your style of board – perhaps have a look at some you have at home.
 Take it from two dimensional to three-dimensional. Using sticks, matchsticks, straw or anything really see if you can make a 3D model of the Eiffel Tower.	 Collect some old magazines and newspaper supplements, even clean food packaging and cut them into little pieces (like a mosaic). They don't have to be square. Sort them into colours. Be inspired by Gaudi to create a piece of art. It could be 2d or 3d. Check out these ideas for inspiration or come up with your own unique idea.	 This is a palaki – a traditional Polish decoration. Watch this video to see how they are made. If you don't have straws, you could use sticks from outside. You could use magazines or food wrappers instead of tissue paper. You could even create your own style and shape. It's your palaki.	 Check out these Russian dolls. Can you create your own? It could be members of your family, a family of your favourite animals. Anything! Check out these ideas.	 Finish the day by playing your board game with members of your family. If you need a dice and don't have one try this online dice.
<p>Find another way of creating the Eiffel Tower. Check out these ideas for inspiration or come up with an idea of your own using something you have at home.</p> <p>Stories you could listen to... Just click on the image to take you to the story. Enjoy!</p>				

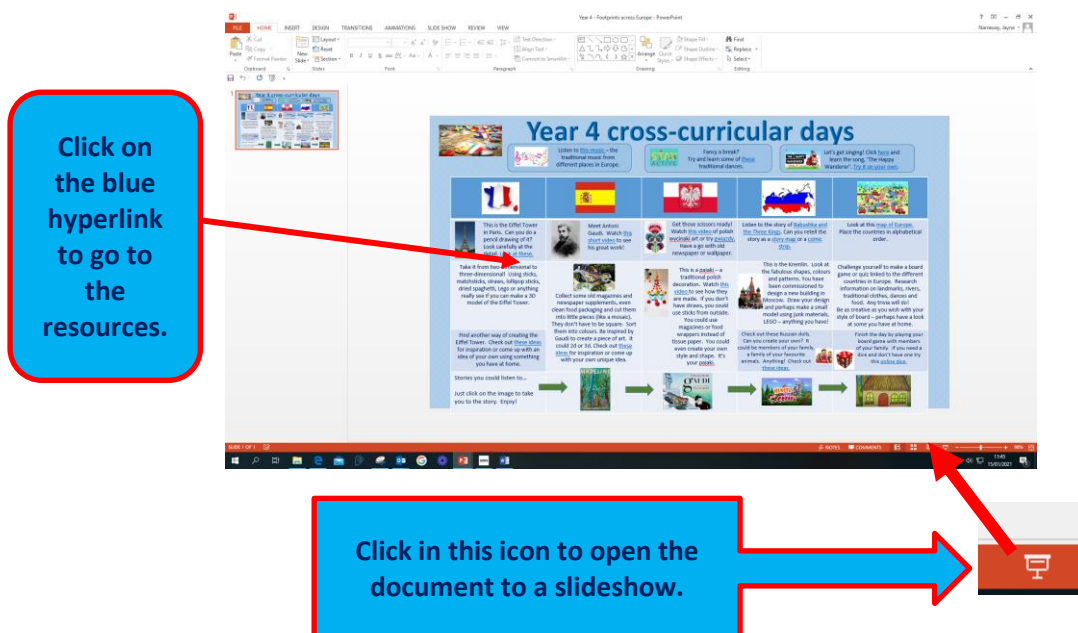


LOTTERY FUNDED



Throughout the day, the children can send in photographs of their work at the different stages, but there will be no scheduled times for these, as long as they are by 4pm if possible. We will be posting some of the children's work on Twitter.

You will need to open the PowerPoint as a presentation so that all the hyperlinks to the resources work.



Following the use of this resource, we would welcome any feedback you can give us as to how it impacted on the children's wellbeing, engagement and the ability for you as parents to have a 'breather' within the week from the routine and structure of the remote learning. We will be sending out a google form to collect your comments on Tuesday. It is hoped that if this works, we will build it into the school week so you might want to start collecting some old magazines, wallpaper and cardboard, straws etc. .

Take care and have a lovely weekend!

Jayne Narraway

Head Teacher



LOTTERY FUNDED

