

Newchurch Community Primary School
Glebeland
Culcheth
Warrington
WA3 4DX



Telephone: 01925 763427
Fax: 01925 766045
www.newchurchprimary.co.uk
Email: newchurch_primary@warrington.gov.uk

Headteacher: Mrs J Narraway

4th September 2020

Dear parent/carer,

For some reason Wednesday felt like Christmas Day – when you have spent time making preparations to check everyone will have a great time, everyone looking smashing in their best clothes and all our family united. We cannot tell you how excited we all are to have the Newchurch Family back together under one roof again!

We would first like to pass on our gratitude to you all as parents for the support you have given us whilst we staggered the children coming in and out of the school at the start and end of the day. This is a mammoth undertaking which requires precision in time-keeping. We thank you for taking the effort to arrive at the exact time and your patience when you just needed to wait a few minutes until a class had been sorted. We appreciate this is hard when you have young children to get up, dressed and fed for a certain time, and then little legs don't move as fast as you would like. I hope that the gentle reminders are taken in the manner in which they are meant - a way of ensuring that all children are safe and collected by their class teachers at the gate at the set time, thus making the morning as stress-free for the children as possible and allowing the other classes to be allowed into school at the correct time.

Many thanks to all the children and parents who were able to respond to the wellbeing questionnaires sent out. Apologies to those who struggled accessing them – some of us (me) are a little technologically disadvantaged and tried to go 'solo' using Google Forms. Not a good idea!

Following on from the comments made in the questionnaire, we just wanted to clarify some things with you. Here goes...

What should I do if my child is ill?

It is important to remind ourselves of the symptoms of COVID -19:

- a new and persistent cough;
- a high temperature, or
- a loss of, or change in, their normal sense of taste or smell (anosmia)

The autumn term is plagued with the common cold and some children may have allergies which present with particular symptoms. Such symptoms may alert us to thinking children have COVID-19. This chart may help you:



CORONAVIRUS	FLU	ALLERGIES
<ul style="list-style-type: none"> ▪ Fever ▪ Cough ▪ Shortness of breath, or difficulty breathing ▪ Symptoms appear 2-14 days after exposure 	<ul style="list-style-type: none"> ▪ Fever ▪ Cough ▪ Muscle aches ▪ Fatigue & weakness ▪ Chills & sweats ▪ Congestion ▪ Sore throat 	<ul style="list-style-type: none"> ▪ Sneezing ▪ Itchy nose, eyes or roof of the mouth ▪ Runny, stuffy nose ▪ Watery, red or swollen eyes

What we would ask is that you air on the side of caution if you think your child may be displaying symptoms similar to that of COVID-19 and we are delighted that some parents have just done that, showing they want to keep themselves and our Newchurch Family safe and well. We will be on hand to support you in deciding if your child needs to self-isolate and would welcome you contacting us.

If your child is going to be absent, please can we ask that you contact school as soon as possible to inform us of the reason for absence. The school office is open from 8:00am. If we have not heard from you by 9:30am, we will telephone you to understand the reason for the absence, just in case it is COVID-19 related and you need support, or we have to take action.

What if my child needs medication?

As stated previously, the school 'hatch' is not to be used but you may phone school on 01925 763427 or email Newchurch_primary@warrington.gov.uk with any information or queries you need to pass on. Please do not be offended if we turn you away and ask you to email or ring if you have anything other than this to communicate to us. We are just trying to keep everyone safe. The only exception to this is if your child requires medication to be administered in the school day. In this case, please call into the school office and the necessary paperwork can be completed.

Should masks be worn?

Due to the measures we have put in place, and based on the guidance given, it is not necessary for children to wear face covering in the classroom. In some cases, adults in the classroom may need to wear a mask as they themselves are vulnerable. Class teachers will only wear a mask when they need to move closer to children resulting in less than 2m social distancing, particularly with medically vulnerable children. If a child needs to wear a mask, then it should be changed on a daily basis, they should be taught how to put it on and take it off safely and should be kept in a sealed plastic bag when not worn.

What if other families are not keeping to the rules?

We are going to be completely honest and say that this is the biggest concern we and some of our families have, even though Warrington's number of cases are the lowest in the region. It is important that we **ALL** keep to the rules of social distancing and enhanced hygiene measures to keep it this way. We have some vulnerable children, staff and parents that are relying on everyone to do their bit and keep to the rules set out by the government.



What could be the consequences? A positive case of COVID-19 in Newchurch, or an increase in cases in the locality as a result of poor social distancing and preventative measures, could possibly result in a lockdown and home learning resuming. This will impact on parents, children and staff. This is not what we want at all – we want to teach the children face to face - so urge everyone to continue to do their best to maintain social distancing etc. in line with the guidance.

To show your commitment to this, we will be sending home a revised Home School Agreement, which we ask you to read, sign and return to us by **Monday 7th September**. A copy of this will be placed on your child's class page for reference.

Will my child get a reading book?

As part of the transition back into school, the children will be listened to read individually read. This will be completed by myself, as the English lead in the school. The aim of this is to gauge the current reading level of your child and look at the next steps in order to develop their reading further. This will take a little time until children have been assessed, please bear with us.

The assessment may mean your child is on a different book band, lower than that they were on prior to the lockdown. Please trust in us – this will be to increase your child's confidence and fluency in reading. We will reassess the children very quickly as we start to see progress. Of course, there may be instances where the children have spent lots of time reading at home and we can move them on.

For children in KS2, please could we ask the children use Reading Plus in the meantime. For Year 3 children, we will aim to have their logins sorted as soon as we can.

Once books have been distributed, they will be changed on a Friday only. All books that are changed will be quarantined for 72 hours in a safe place and then put back in the baskets. Once, we have assessed all the children and know the range of books needed, we will place baskets of books in each classroom for the children to select from.

Whilst we are on the subject of reading, please could we ask that daily reading be given a high priority at home. If we could aim for at least three reading sessions a week, ideally every day, that would be fantastic in ensuring the children make progress.

What will learning look like if the school is advised to lockdown?

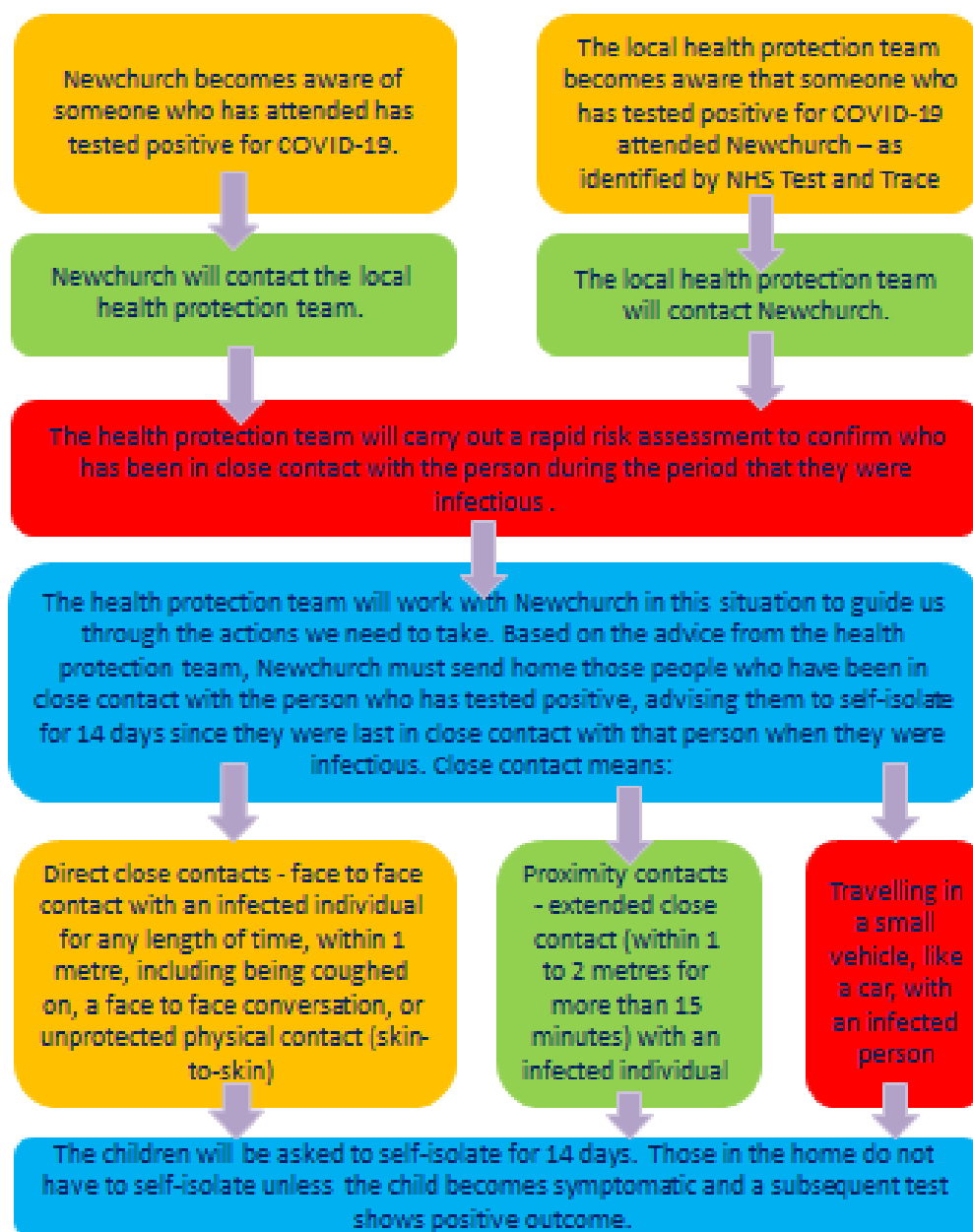
If we are asked to lock down, then the expectation is to provide a sequence of lessons as they would have in school, with teachers giving feedback. Therefore, it will look different to the way it was last time as the National Curriculum will continue and the expectations is that all children engage in home learning. We will be giving clear guidance on this next week and beginning to use Google Classrooms for homework to help everyone get into the swing of using the online platform.

What if there is a positive outbreak of COVID-19 at Newchurch?

We hope that this never happens but in the event it does, it is important that we are all aware of the procedure that will be followed to keep everyone safe. This flow chart shows what will happen:



Managing Confirmed Cases at Newchurch



We will keep you updated should any further guidance be given to us which impacts on you and the children.

Once again, thank you so much for sending your children back to school and trusting us with their safety particularly when the media is giving conflicting messages. Here's to a happy, safe and successful 2020-2021.

Have a lovely weekend.

Mrs Jayne Narraway

Headteacher



LOTTERY FUNDED

